

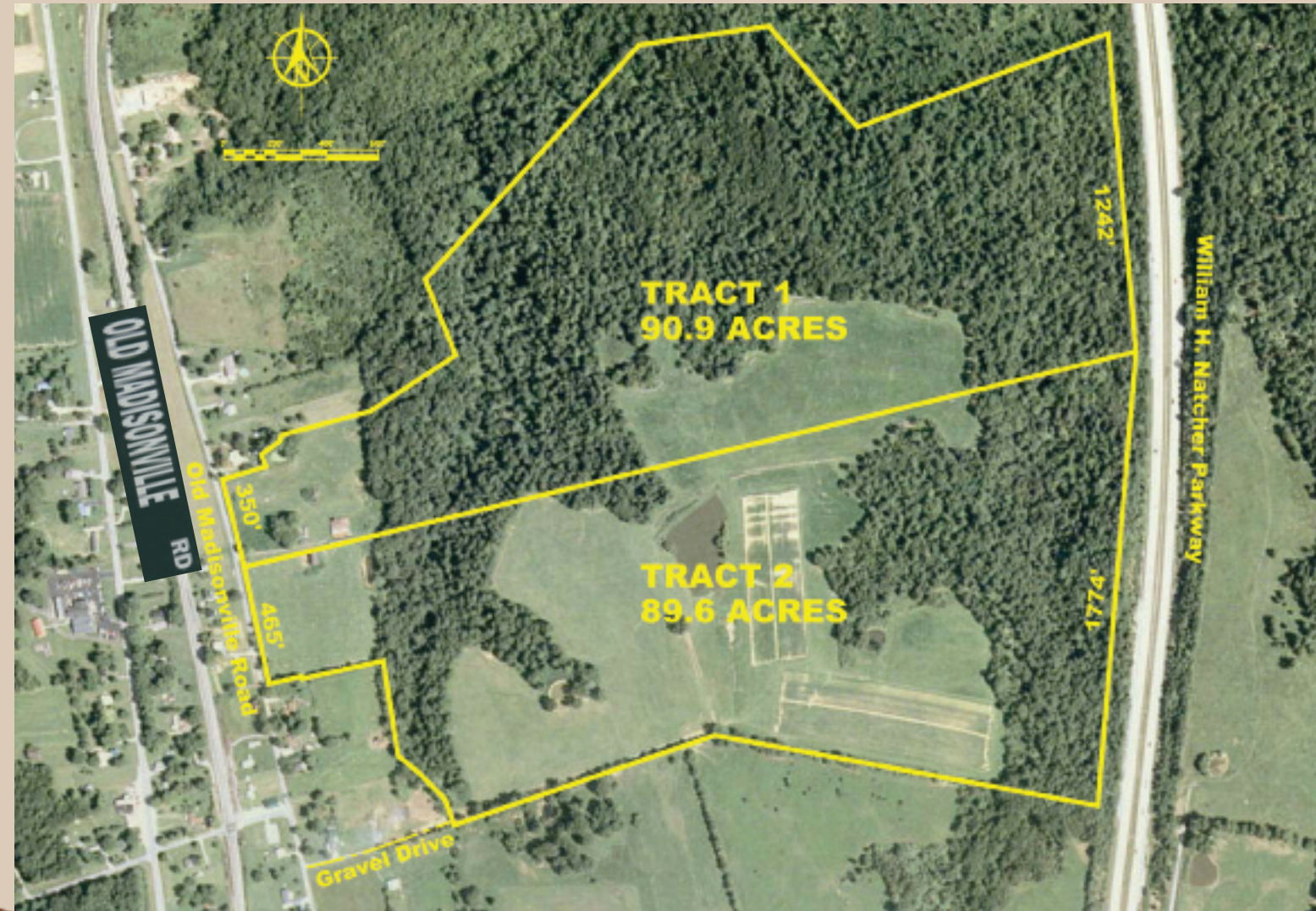
# ABSOLUTE LAND AUCTION

*The Late Thomas E. Webster Estate*

THURSDAY APRIL 1, 2010 @ 6:00 PM



**+/-65 TILLABLE ACRES! +/-110 ACRES OF WOODLANDS!  
TIMBER! STOCKED POND! AN ABUNDANCE OF WILDLIFE!**



Old Madisonville Rd. -  
Hopkinsville, KY

**180  
ACRES**

## REAL ESTATE TRACTS:

**Tract 1- 90.9 Acres. Tract 2- 89.6 Acres**



**AUCTION HELD AT BRANDY'S CROFTON RESTAURANT, 107 S. MADISONVILLE ST. CROFTON, KY 42217**