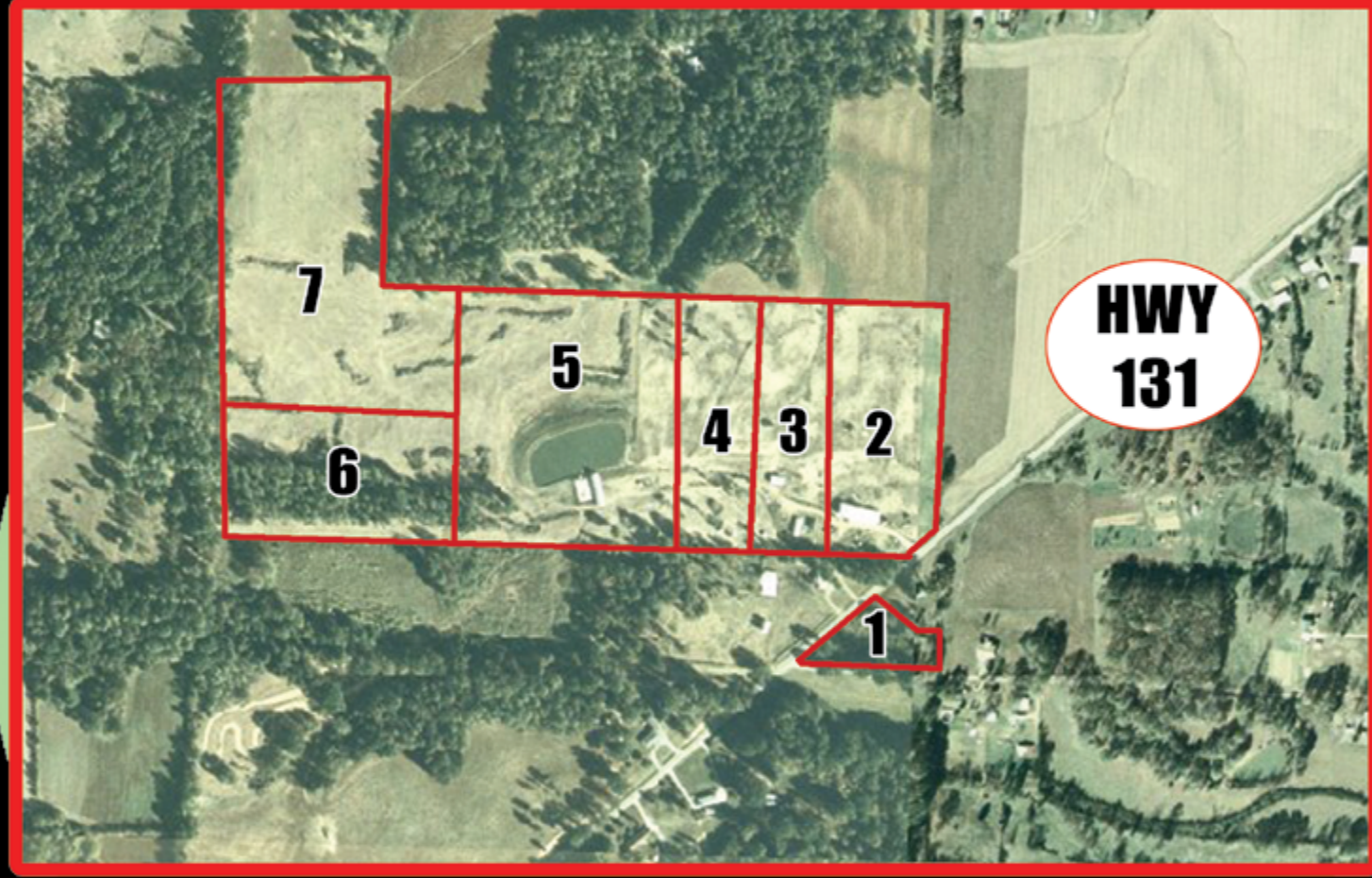


ABSOLUTE LAND Auction

SATURDAY APRIL 21ST, 2007
@ 10:00 AM

ATTENTION:
HUNTERS
SUBDIVIDERS
DEVELOPERS
FARMERS

Outstanding Open Tillable Land



REAL ESTATE TRACTS :

- Tract 1-** 1.69 Acres On Corner Of Switzer Lane and Hwy. 131,
- Tract 2-** 7.41 Acres Multi Bay Shed Concrete Floor,
- Tract 3-** 5.27 Acres With Small Dwelling and Well
- Tract 4-** 5.57 Acres
- Tract 5-** 15.40 Acres With Building and Concrete Pad, Large Pond and Well
- Tract 6-** 8.04 Acres Wooded And Open Land
- Tract 7-** 17.21 Acres Open Tillable Land.

*Tracts 3-7 have a 40 Foot Wide Easement For Ingress and Egress.



Beautiful Wooded Tracts

Information supplied is without any warranties or representations, either expressed or implied whatsoever, from Harris Auction, sellers or their respective representatives, agents or employees. Prospective bidders are advised to avail themselves of the land and to make an inspection of the premises on their own behalf, consulting whatever advisors they may feel appropriate. Lines on aerial plats show only the relative locations of the tracts subject to sale and may not be relied on as an exact location or boundary. Although all information in all advertisements is obtained from sources deemed reliable. All announcements day of sale take precedence over all advertisements.

AUCTION HELD ON SITE!!!



HARRIS

REAL ESTATE & AUCTION
(270) 247-3253 • 800-380-4318



Visit our Website: www.harrisauctions.com
Your Professional Auctioneers