

200.303 Acres in 8 Tracts & Combinations

ABSOLUTE LAND AUCTION

FARM LOCATION: New Hwy. 80 Four Lane, Cook Store Trail & Hammond Rd., Murray, KY 42071 (Coldwater Community). **From Murray:** Take New Hwy. 80 West 7.4 Miles To Property. **From Mayfield:** Take New Hwy. 80 East 11 Miles To Property. Signs Posted!

**REAL ESTATE WILL SELL AT 7:00 PM
TO THE HIGHEST BIDDER REGARDLESS OF PRICE!
AUCTION HELD AT THE MURRAY COUNTRY CLUB
2200 COLLEGE FARM RD. MURRAY, KY, 42071**

REAL ESTATE: Tract 1* 4.125 Acres. Tract 2* 24.275 Acres. Tract 3* 45.761 Acres. Tract 4* 32.092 Acres. Tract 5* 29.883 Acres. Tract 6* 2.998 Acres w/Well. Tract 7* 24.319 Acres. Tract 8* 36.850 Acres

Between Murray & Mayfield, KY

**BUY ANY TRACT,
COMBINATION,
OR ENTIRE PROPERTY**

NEW 4 LANE HWY.

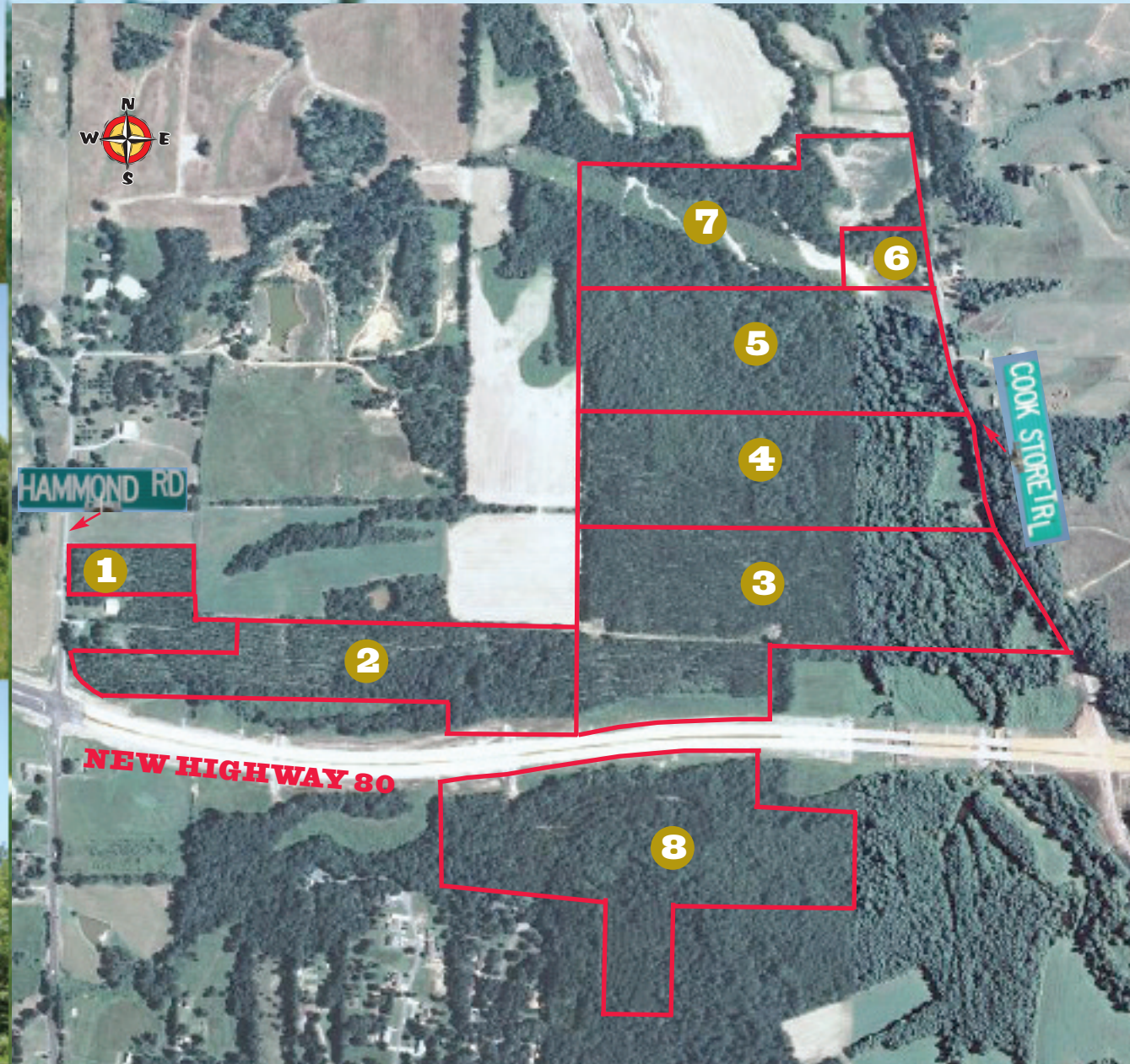
GREAT CALLOWAY CO. FARM

WOODED BUILDING SITES!

GOOD HUNTING GROUND!

TILLABLE ACRES

www.harrisauctions.com



HARRIS
REAL ESTATE & AUCTION
(270) 247-3253 • 800-380-4318

Thurs., August 19, 2010 @ 7:00 pm