

HARRIS
REAL ESTATE & AUCTION
 3855 St. Rt. 45N
 Mayfield, KY 42066

41.83
acres
 in 6 tracts & combinations

FIRST CLASS
 U.S. POSTAGE
 PAID
 MAYFIELD, KY 42066
 PERMIT NO. 25

Canter Pit Rd. Sedalia, KY
 The Lynnville Community



Saturday
Dec. 13th @ 10AM



Dale Harris
 Broker/Auctioneer

HARRIS
REAL ESTATE & AUCTION
 (270) 247-3253 • (800) 380-4318

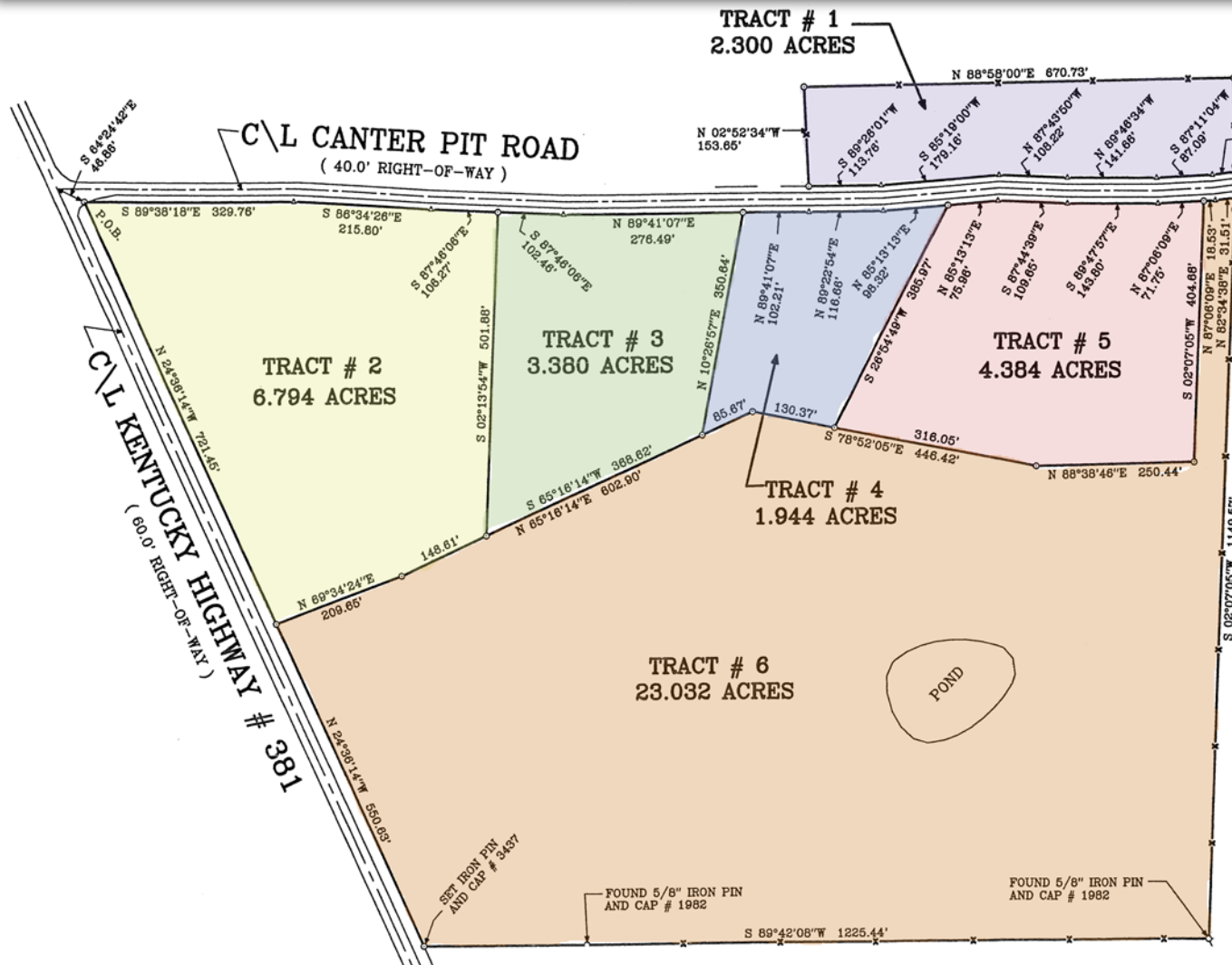


Michael Harris
 Broker/Auctioneer

Visit our Website: www.harrisauctions.com

Tract 1 - 2.3 Acres
Tract 2 - 6.794 Acres
Tract 3 - 3.380 Acres

Tract 4 - 1.944 Acres
Tract 5 - 4.384 Acres
Tract 6 - 23.032 Acres



ABSOLUTE LAND AUCTION

Saturday, December 13 @ 10:00AM

Canter Pit Rd. Sedalia, KY
 The Lynnville Community

41.83
acres

in 6 tracts & combinations

Nice Open Rolling Farm Land
Great Building Sites

Selling Regardless Of Price To The Highest Bidder!!
Real Estate Sells @ 10:00AM

Auction To Be Held At The Sedalia Restaurant

A Short Drive To Mayfield & Murray

FARM LOCATION

Canter Pit Rd. Sedalia, KY (The Lynnville Community)

From Mayfield: Take Hwy. 97 South 5.7 Miles To Hwy. 381 South. Go Straight To Go On Hwy. 381 South. Follow Hwy. 381 South 8.1 Miles To Canter Pit Rd. Proceed To Farm.

From Murray: Take Hwy. 94 West 15.4 Miles To Hwy. 381 South. Turn Left On Hwy. 381 South And Follow 2.1 Miles To Canter Pit Rd. Proceed To Farm. Signs Posted!!

HARRIS
REAL ESTATE & AUCTION
 (270) 247-3253 • (800) 380-4318

