

Absolute Land Auction

Thursday, July 3rd, 2008
7:00 P.M.

67.353
acres
in 8 Tracts
& Combinations

Land Tract Located Between
North Ballard Church Rd.
and Hwy. 1345 (Myers Rd.)

Great Ballard Co. Farmland!
Timber Tracts on Farm!
Good Building Sites on
Batts Rd. & Beno Wells Lane,
Nice Mini-Farm Tracts.

DIRECTIONS: From Wickliffe, KY –
Take Hwy. 286 East 4 Miles To N.
Ballard Ch. Rd., Proceed North 1.1
Miles To Batts Road. From
Paducah, KY Take Hwy. 62 West To
Hwy. 286 West, To N. Ballard Ch.
Rd., Proceed North 1.1 Miles To
Batts Road. Signs Posted!!

REAL ESTATE TRACTS -

Tract 1	1.739 Acres
Tract 2	1.360 Acres
Tract 3	2.988 Acres
Tract 4	2.595 Acres
Tract 5	2.603 Acres
Tract 6	12.983 Acres
Tract 7	14.887 Acres
Tract 8	28.198 Acres

**SELLING REGARDLESS OF
PRICE TO THE HIGHEST BIDDER!!!**

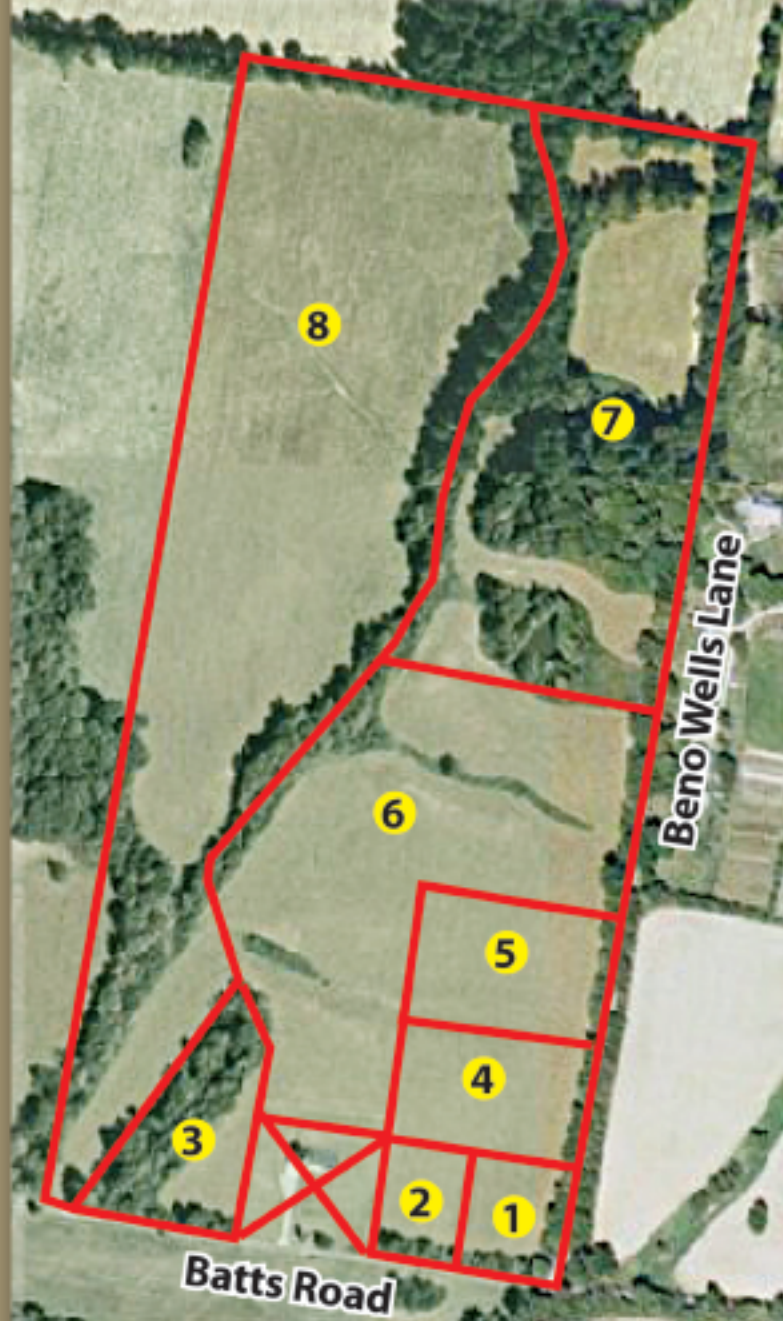
Real Estate Sells At 7:00 PM.
Auction Held At
Ballard County Country Club
Located At
2145 La Center Road Hwy 802
LaCenter, Kentucky

REAL ESTATE TERMS:

15% Down Day of Sale Balance in 30
Days. A 10% Buyer's Premium will be
added to final bids and included in the
contract sale price.

Information supplied is without any warranties or
representations, either expressed or implied whatsoever, from
Harris Auction, sellers or their respective representatives,
agents or employees. Prospective bidders are advised to avail
themselves of the land and to make an inspection of the
premises on their own behalf, consulting whatever advisors
they may feel appropriate. Lines on aerial plats show only the
relative locations of the tracts subject to sale and may not be
relied on as an exact location or boundary. Although all
information in all advertisements is obtained from sources
deemed reliable. All announcements day of sale take
precedence over all advertisements.

Batts Road & Beno Wells Lane
(The New York Community)



**Farm is selling subject to
Tenant's Rights for 2008 Farm Year.
Buyer to receive Seller's Land Rent.**

HARRIS
REAL ESTATE & AUCTION
(270) 247-3253 • 800-380-4318

www.harrisauctions.com