

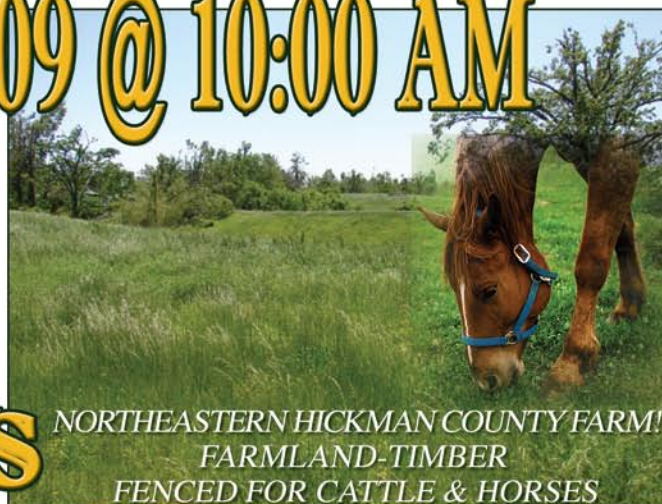
ABSOLUTE LAND AUCTION

Saturday June 6th 2009 @ 10:00 AM

LOCATION: Hwy. 1686 - Hwy. 1748 & Hwy. 307, Beulah, KY (Hickman County).
From Hwy. 80 & 307 Intersection Take 307 South
2 Miles To Property. **Signs Posted!!**

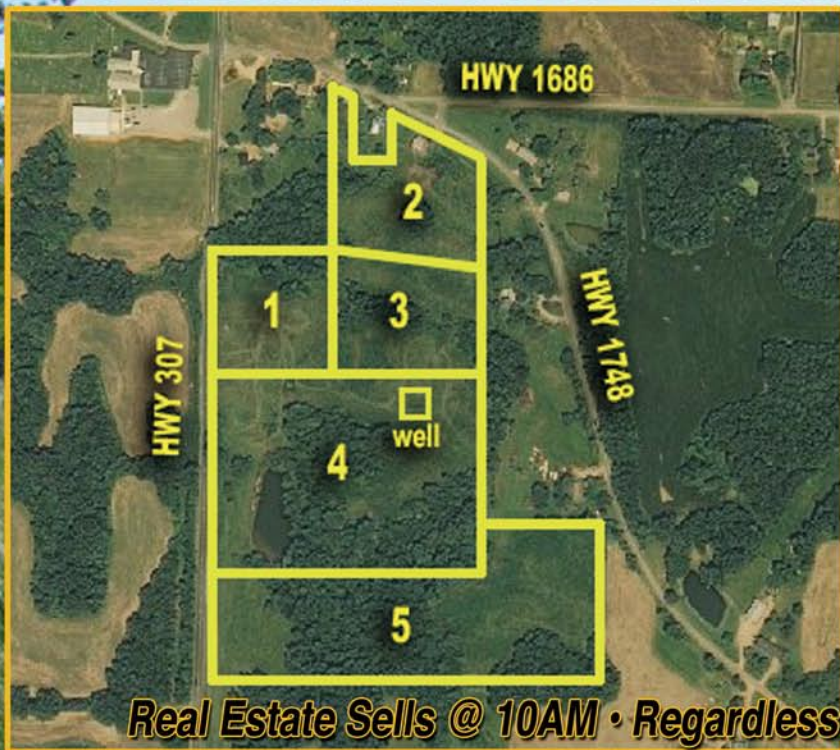
34.256 Acres

IN 5 TRACTS & COMBINATIONS



NORTHEASTERN HICKMAN COUNTY FARM!
FARMLAND-TIMBER
FENCED FOR CATTLE & HORSES

GREAT HUNTING!
NICE POND & 42'X100' BUILDING!



TRACT 1*

2.949 Acres With A Nice
42'x100' Building

TRACT 2*

4.009 Acres

TRACT 3*

5.398 Acres

(Tract 3 Is A Swing Tract. Swing Tracts Can
Only Be Combined With Adjoining Tracts.)

TRACT 4*

11.393 Acres With
Pond & Well

TRACT 5*

10.507 Acres

Real Estate Sells @ 10AM • Regardless Of Price • Auction Held On Site!

Farm Equipment At Auction



**Selling Saturday,
June 6th
After The
Real Estate**

HARRIS

REAL ESTATE & AUCTION

(270) 247-3253 • 800-380-4318

2 Locations - Mayfield & Hopkinsville