

Absolute Auction

Saturday, March 3rd, 2007 @ 10:00 a.m.

COUNTY WATER AND NATURAL GAS ON PROPERTY!

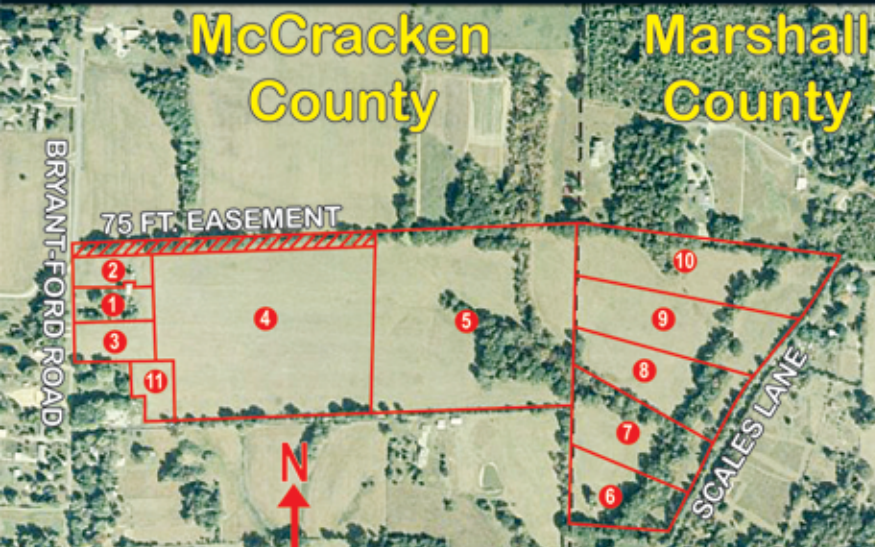
EXCELLENT McCracken & MARSHALL COUNTY MINI-FARMS WITH LEVEL TO GENTLY ROLLING CROP LAND, OUTSTANDING BUILDING SITES, GREAT POTENTIAL SUBDIVISION DEVELOPMENT. TWO ROAD FRONTAGES BRYANT FORD ROAD AND SCALES LN.

TRACTS 1-5 & 11 ARE LOCATED IN McCracken CO. AND TRACTS 6-10 ARE LOCATED IN MARSHALL CO. ON SCALES LANE JUST OFF OAKLAND CHURCH ROAD

65.6

Acres

in 11 Tracts & Combinations



REAL ESTATE TRACTS

TRACT 1 - 2 Bedroom, 2 Bath Brick Manufactured Home, Open Living Room & Kitchen, Mature Shade Trees & 24'x40' Metal Shop Building situated on 1.285 Landscaped Acres

- TRACT 2 - 1.155 Acres
- TRACT 3 - 1.746 Acres
- TRACT 4 - 15.722 Acres
- TRACT 5 - 19.273 Acres
- TRACT 6 - 3.306 Acres
- TRACT 7 - 4.019 Acres
- TRACT 8 - 4.787 Acres
- TRACT 9 - 5.452 Acres
- TRACT 10 - 7.856 Acres

TRACT 11 - 1.00 Acre - Swing Tract - can only be combined with adjoining tracts.



24' x 40' Shop

REAL ESTATE WILL SELL AT 10:00 AM REGARDLESS OF PRICE BUY ANY TRACT, COMBINATION, OR ENTIRE PROPERTY!

REAL ESTATE TERMS: 15% Down Day of Sale Balance in 30 Days. Buyer Will Be Required To Sign A Lead Based Paint Waiver. *A 10% Buyers Premium Will Be Added To Final Bids And Included In The Contract Price.

Information supplied is without any warranties or representations, either expressed or implied whatsoever, from Harris Auction, sellers or their respective representatives, agents or employees. Prospective bidders are advised to avail themselves of the land and to make an inspection of the premises on their own behalf, consulting whatever advisors they may feel appropriate. Lines on aerial plots show only the relative locations of the tracts subject to sale and may not be relied on as an exact location or boundary. Although all information in all advertisements is obtained from sources deemed reliable. All announcements day of sale take precedence over all advertisements.

AUCTION HELD ON SITE - 750 BRYANT-FORD ROAD, PADUCAH-REIDLAND, KY