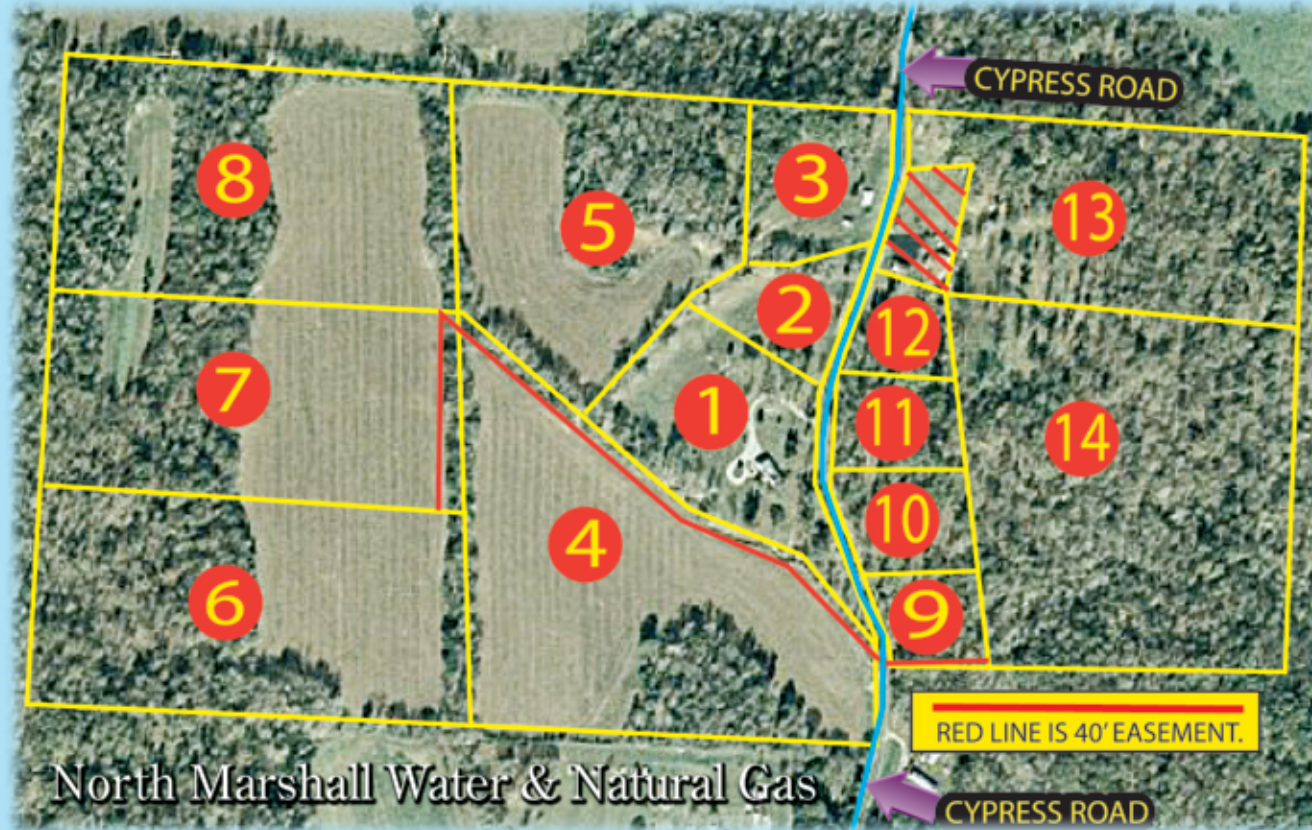


ABSOLUTE LAND AUCTION

Saturday, March 15, 2008 @ 10 a.m.

SUBDIVIDERS,
DEVELOPERS,
BUILDERS - THIS
PROPERTY IS A
GRAND OPPORTUNITY
NESTLED IN THE HEART
OF KENTUCKY LAKE
COUNTRY!!!



North Marshall Water & Natural Gas

REAL ESTATE TRACTS

QUALITY MARSHALL
COUNTY BOTTOM
FARMLAND!
RECREATIONAL
HUNTING LAND!
WOODED BUILDING
TRACTS ALONG
CYPRESS ROAD!
NORTH MARSHALL
WATER AND
NATURAL GAS
ON PROPERTY!!

DON T MISS
THIS GREAT
OPPORTUNITY!

OPEN HOUSE
Tuesday,
March 4, 2008
5-7:00 pm

Selling
Separate:
Ford 650 Backhoe
w/Cab &
Extending Backhoe,
2 Row
Cultivators &
3 Pt. Hitch
Hayspike

TRACT 1 ..Custom Built +/- 3400 Sq. Ft. - 4 Bedroom,
.....3 Bath Home Has Attached 2 Car Garage.
.....Storage Building, 32'X58 Metal Shop Building,
.....Easy Access To The Kentucky Lake,
.....All Situated On 5.14 Acres -
.....**MORE DETAILED FEATURES ABOUT TRACT 1**
.....**INSIDE THIS BROCHURE**
Tract 2 2.1 Acres
Tract 3 3.1 Acres With Barn
Tract 4 16.32 Level Farmland Acres

Tract 5 Stocked Pond With Dock On 10.76 Acres
Tract 6 13.14 Acres Joining Woodridge Subdivision
Tract 7 12.72 Acres
Tract 8 14.49 Acres
Tract 9 2.28 Acres
Tract 10 1.99 Acres
Tract 11 2.38 Acres
Tract 12 1.93 Acres
Tract 13 9.68 Acres
Tract 14 12.25 Acres

HARRIS
REAL ESTATE & AUCTION
(270) 247-3253 • 800-380-4318