

Absolute Land Auction

Saturday, March 31st, 2007 @ 10:00 a.m.
 Greenville Road (Highway 107) and Dogwood Kelly Road
 Christian County - Hopkinsville, KY - The Dogwood Community
 5 Miles North of Hopkinsville

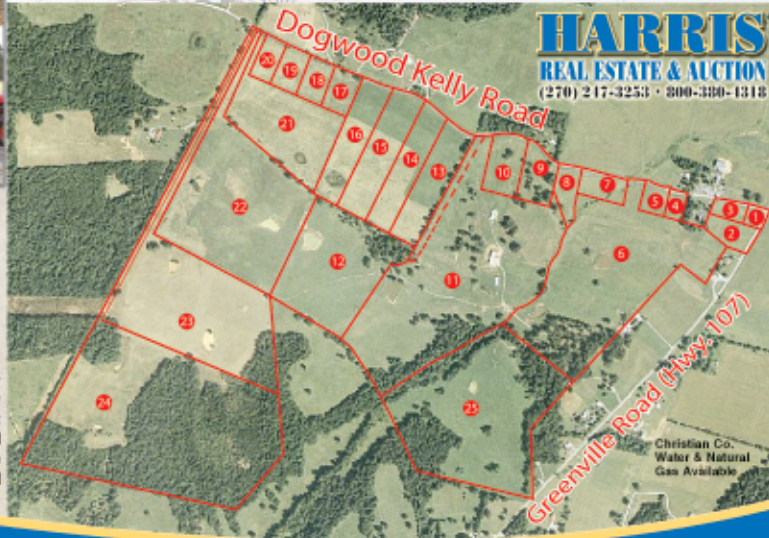


369.08 acres

IN 25 TRACTS & COMBINATIONS



Tract 1	1,228	Tract 6	40,013	Tract 11	51,514	Tract 16	8,610	Tract 21	14,637
Tract 2	2,118	Tract 7	2,814	Tract 12	22,155	Tract 17	2,265	Tract 22	34,306
Tract 3	0,917	Tract 8	3,137	Tract 13	7,722	Tract 18	2,213	Tract 23	35,591
Tract 4	1,296	Tract 9	3,946	Tract 14	7,279	Tract 19	2,227	Tract 24	66,213
Tract 5	1,630	Tract 10	4,551	Tract 15	9,821	Tract 20	2,262	Tract 25	40,691



HARRIS
 REAL ESTATE & AUCTION
 (270) 217-3253 • 800-330-1318

TRACTORS: John Deere 4430 Diesel Powershift, Cab & Air, 7270 Hours, 18.4-39R1 Duals, SN 067720R, 1105 Diesel Massey Ferguson, 2555 Hours, SN 98 39048, 35 Massey Ferguson Gas Burner, Ferguson Gas Tractor, McCormick Farmall M. • **HAY EQUIPMENT:** "Like New" New Holland BR770A Baker w/Monitor Only Rolled 283 Rolls, Sibra 8 Wheel Raiks, Kuhn 7 Ft. Disc Mower GMD 66 HD, New Holland 848 Baker w/Monitor, AGCO Tedder, New Idea 4150 Rake, 3 Pl. Hitch Hay Spike, EZ Square Bale Catch • **TRUCKS:** 1990 GMC 7000 Diesel With 1995 Cross Stainless Steel Spreader Bed Serial 577606 Model TMS1300AH, 1972 International 1600 Dump Truck, 1973 Chevrolet 1/2 Ton 4WD, 57,000 Actual Miles • **SUPPORT EQUIPMENT, TILLAGE, STOCK TRAILERS & MORE:** Bush Hog 2615 Legend 15' Rotary Cutter 6' Rotary Cutter, 18' Disc w/Wings, Case IH 10 5 Knife Ripper, 265 John Deere Front Loader w/Bucket and Spear, JD Quick Hitch, 3 Pl. Spreader, 5' Disc., Grader Blade, 2 Bottom Plows, 3 Pl. Cultivators, 9 Hay Rings, 10 Tube Gates, 18 Mineral Feeders, 3 Rubber Tire Wagons, Fence Wire, 3 Pl. Post Hole Digger, Antique Pull Type Combine, Cycle Mower, 110 Mig Welder, 25 Gal. Elec. Sprayer, 16' Stock Trailer, 1997 20' Goose Neck Stock Trailer. DOZER - D-7E Catpillar Serial No. 47A5487

THE LAND AUCTION WILL BE AT 10:00 AM ON THE FARM INSIDE BUILDING.
 FARM EQUIPMENT WILL SALE AT APPROXIMATELY 1:00 PM CENTRAL TIME.

For Questions About Equipment Call:
 Dwight Scott 270-887-7950 Cell
 Mickey Noel 270-269-8146 Home
 or 270-839-0658 Cell

www.harrisauctions.com

REAL ESTATE: 15% Down Day
 of Sale Balance in 30 Days.
 PERSONAL PROPERTY: Cash or Check Day of Sale With
 Bank Letter, With Proper Identification.