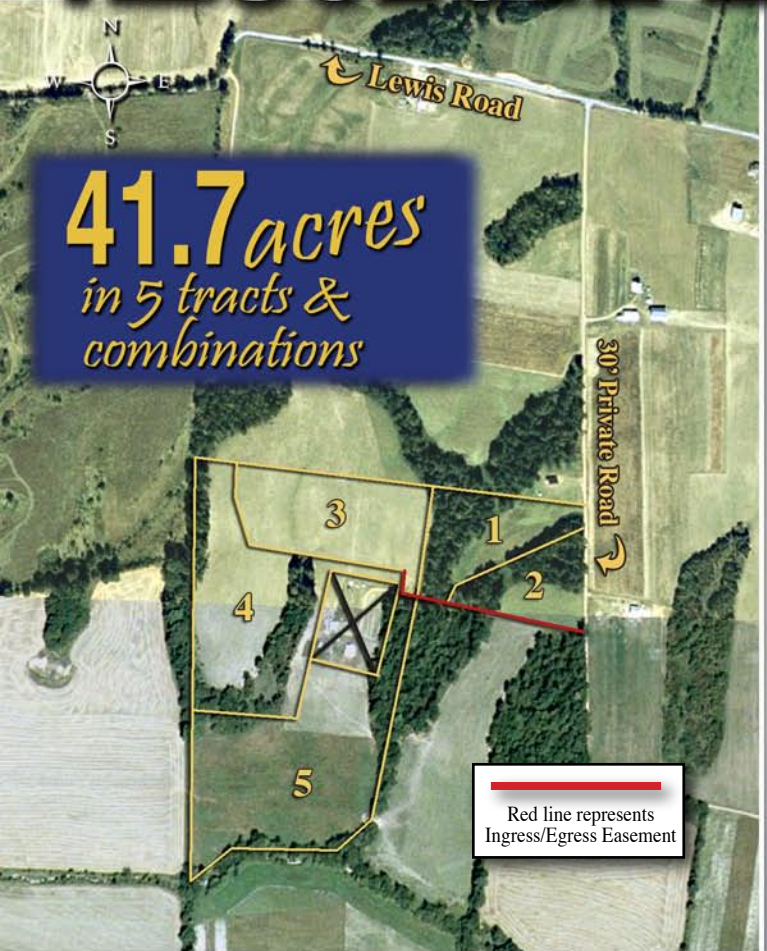


ABSOLUTE LAND AUCTION



41.7 acres
in 5 tracts & combinations

Red line represents Ingress/Egress Easement

Saturday May 10th, 2008 @10AM
Excellent Graves County Mini-Farm with level to gently rolling land, outstanding building sites, peaceful country setting, productive bottom farmland. Nice wooded tracts.



Just A Fabulous Farm w/Unlimited Potential in a Great Location Close to Mayfield

LOCATION: Lewis Road, Mayfield, KY. From Mayfield Take Hwy. 58/80 W 6.4 Miles, Turn Left Onto Ballard Rd. Proceed 0.8 Miles, Turn Right Onto Lewis Rd. From Hwy. 80 and New Dublin Rd. (Hwy. 384) proceed South to Ballard Rd., then West to Lewis Rd. Proceed To Auction Site. Signs Posted!!



REAL ESTATE WILL SELL AT 10:00 AM REGARDLESS OF PRICE! AUCTION WILL BE HELD ON SITE BUY ANY TRACT, COMBINATION, OR ENTIRE PROPERTY!

HARRIS
REAL ESTATE & AUCTION
(270) 247-3253 • 800-380-4318

ABSOLUTE LAND AUCTION
Saturday May 10th @ 10AM

| MAY 2008 | | | | | | |
|----------|----|----|----|----|----|----|
| S | M | T | W | TH | F | S |
| | | | | 1 | 2 | 3 |
| 4 | 5 | 6 | 7 | 8 | 9 | 10 |
| 11 | 12 | 13 | 14 | 15 | 16 | 17 |
| 18 | 19 | 20 | 21 | 22 | 23 | 24 |
| 25 | 26 | 27 | 28 | 29 | 30 | 31 |

41.7 acres
in 5 tracts & combinations

HARRIS
REAL ESTATE & AUCTION
3855 ST. RT. 45 NORTH • MAYFIELD, KY

HARRIS
REAL ESTATE & AUCTION
(270) 247-3253 • 800-380-4318
Visit our Website: www.harrisauctions.com

"Your Professional Auctioneers"



REAL ESTATE TRACTS
TRACT 1* 3.313 Acres • TRACT 2* 2.953 Acres
TRACT 3* 6.368 Acres • TRACT 4* 13.699 Acres
TRACT 5* 15.371 Acres

JUST A FABULOUS FARM WITH UNLIMITED POTENTIAL IN A GREAT LOCATION CLOSE TO MAYFIELD!!
BUY ANY TRACT, COMBINATION, OR ENTIRE PROPERTY!
Visit: www.harrisauctions.com
Property is open for your own private viewing tour.

REAL ESTATE TERMS:
15% Down Day of Sale Balance in 30 Days. *A 10% Buyers Premium Will Be Added To The Final Bid And Included In The Contract Price.

Information supplied is without any warranties or representations, either expressed or implied whatsoever, from Harris Auction, sellers or their respective representatives, agents or employees. Prospective bidders are advised to avail themselves of the land and make an inspection of the premises on their own behalf, consulting whatever advisors they may feel appropriate. Although all information in all advertisements is obtained from sources deemed reliable. All announcements day of sale takes precedence over printed material. Buyer will be required to sign a lead base paint waiver.

FIRST CLASS
U.S. POSTAGE
PAID
MAYFIELD, KY 42066
PERMIT NO. 25