

Real Estate Auction

THE FORMER SPARKS ELEMENTARY SCHOOL
 Thursday, Nov. 6th, 2008 @ 10:00 AM
 LOCATION: 1201 W BROADWAY, MAYFIELD, KY
SIGNS POSTED!!

REAL ESTATE - VEHICLES - EQUIPMENT



REAL ESTATE TRACTS - TRACT 1* - +/- 40, 344 Sq. Ft. Brick Building Featuring 14 Classrooms, 2 Offices, 6 Restrooms, Library, Lounge, Kitchen & +/-1537 Sq. Ft. Gymnasium/Multi-Purpose Room w/ Stage. Building Is ZONED P-1 & Is Situated On 1.607 Acres w/ Paved Parking Lot.

TRACT 2* 0.300 Acres

TRACT 3* 0.300 Acres

TRACT 4* 0.309 Acres

TRACT 5* 0.304 Acres

EQUIPMENT/VEHICLES – 3 Point Hitch 110 Gallon Spray Tank, 32 Cubic Ft. Capacity Cub Cadet Yard Vacuum, 44" Cub Cadet Yard Sweep (Model #190-459B-100 3321), 90" Woods Finish Mower (Model #P990), Fuel Tank w/ Pump, 110 Gallon "L" Truck Tank w/ 12v Pump, 1975 International Harvester 2 Ton Grain Truck, 1996 Jeep Cherokee w/ 136,922 Miles, Like New 30" Cut Snapper Mower w/ 25-30 Hours.

AUCTION HELD ON SITE! REAL ESTATE WILL SELL AT 10:00 AM!

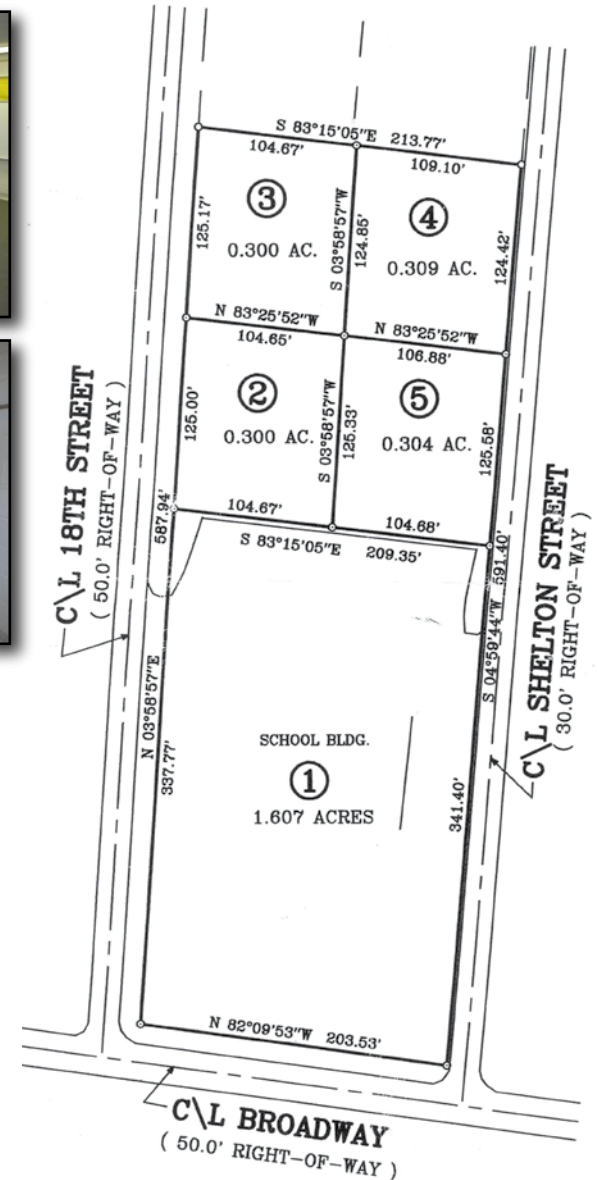
HARRIS

REAL ESTATE & AUCTION

(270) 247-3253 or 800-380-4318

www.harrisauctions.com

Prospective Bidders Are Advised To Avail Themselves Of The Property And To Make An Inspection Of The Premises On Their Own Behalf, Consulting Whatever Advisors They Feel Appropriate Prior To Date Of Sale. **REAL ESTATE:** 15% Down Day Of Sale Balance In 30 Days. Buyer Will Be Required To Sign A Lead Based Paint Waiver. **PERSONAL PROPERTY:** Cash Or Check Day Of Sale With Proper Identification



- TRACT 1**
1.607 Acres
- TRACT 2**
0.300 Acres
- TRACT 3**
0.300 Acres
- TRACT 4**
0.309 Acres
- TRACT 5**
0.304 Acres