

# HARRIS

REAL ESTATE & AUCTION

3855 ST. RT. 45N  
MAYFIELD, KY 42066

6965 PEMBROKE ROAD  
HOPKINSVILLE, KY 42240

**Absolute Auction**  
**Saturday**  
**October 25, 2008**  
**@10AM**

**65 Acres+/-**  
in 5 Tracts & Combinations

FIRST CLASS  
U.S. POSTAGE  
PAID  
MAYFIELD, KY 42066  
PERMIT NO. 25



Dale Harris  
Broker/Auctioneer

# HARRIS

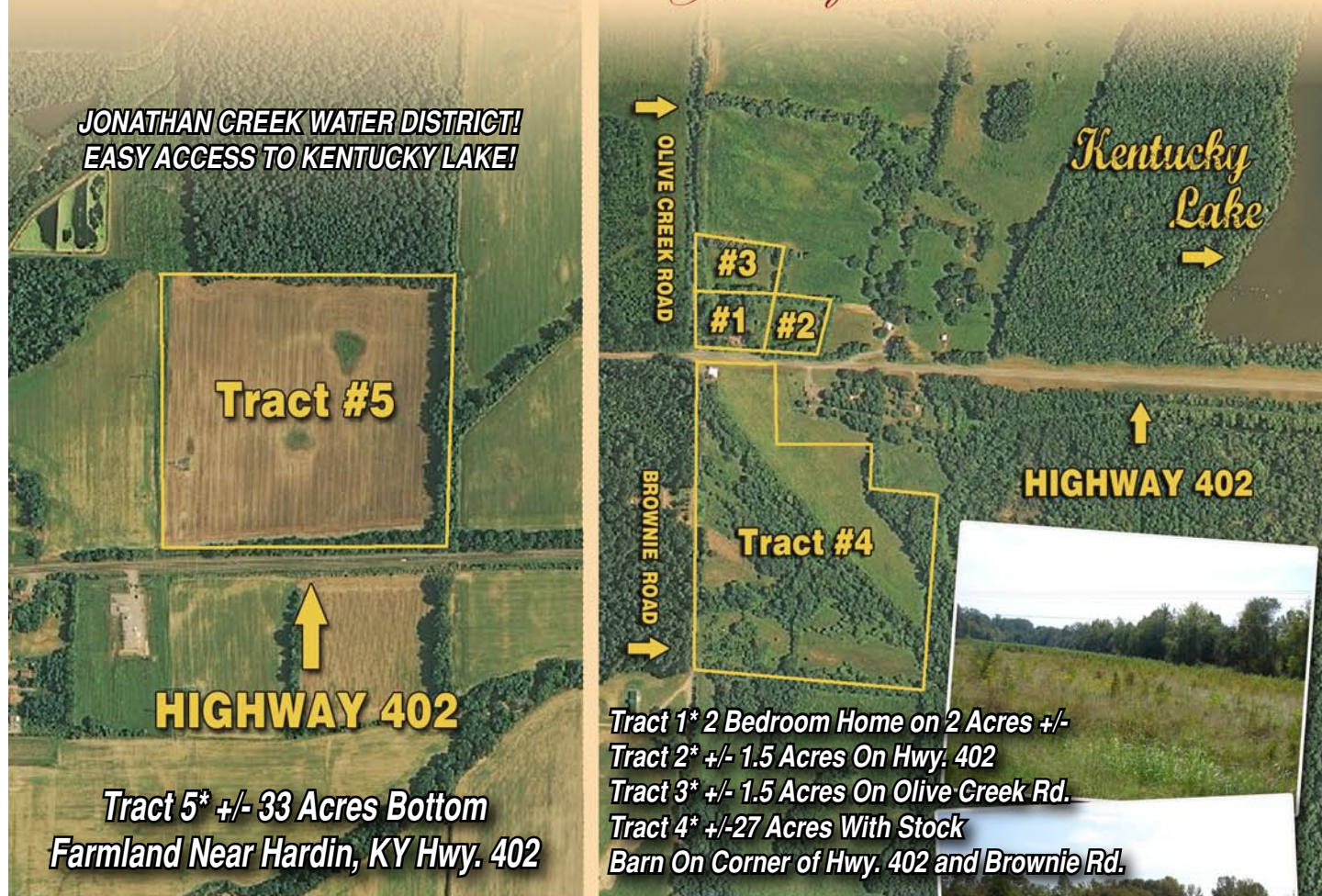
REAL ESTATE & AUCTION  
(270) 247-3253 • (800) 380-4318



Michael Harris  
Broker/Auctioneer

Visit our Website: [www.harrisauctions.com](http://www.harrisauctions.com)

*Your Professional Auctioneers*



JONATHAN CREEK WATER DISTRICT!  
EASY ACCESS TO KENTUCKY LAKE!

**Tract #5**

**HIGHWAY 402**

**Tract 5\* +/- 33 Acres Bottom**  
**Farmland Near Hardin, KY Hwy. 402**

**Tract 1\* 2 Bedroom Home on 2 Acres +/-**  
**Tract 2\* +/- 1.5 Acres On Hwy. 402**  
**Tract 3\* +/- 1.5 Acres On Olive Creek Rd.**  
**Tract 4\* +/- 27 Acres With Stock**  
**Barn On Corner of Hwy. 402 and Brownie Rd.**

REAL ESTATE: 15% Down Day of Sale Balance in 30 Days. Make Inspections Prior To Day Of Sale, Buyer Will Be Required To Sign A Lead Based Paint Waiver. PERSONAL PROPERTY: Cash or Check Day of Sale, With Proper Identification.

Information supplied is without any warranties or representations, either expressed or implied whatsoever, from Harris Auction, sellers or their respective representatives, agents or employees. Although all information in all advertisements is obtained from sources deemed reliable. All announcements day of sale takes precedence over printed material.



# Absolute Auction

**2 Bedroom, 1 Bath Home & 65 Acres+/-**  
**in 5 Tracts & Combinations**

**Saturday October 25th**  
**@10:00 AM**



**PERSONAL PROPERTY: BEDROOM SUITE AND HOUSEHOLD**  
**ITEMS TO BE SOLD AFTER THE REAL ESTATE.**

Marshall County FSA Farm #329 - 11.1 Acres In CRP Until September 30, 2012. 2008 DCP  
Payment of \$558.00 Dollars. Corn Base 20.5 Acres, Grain Sorghum Base 9.7 Acres.



**Real Estate Sells At 10:00 AM**  
**Regardless Of Price!**  
**OPEN HOUSE: TUESDAY OCTOBER**  
**14TH FROM 5:00 PM - 6:00PM**

**Great Country Location Between**  
**Hardin & Aurora, KY.**  
**Excellent Marshall County Farmland.**

**LOCATION: 3411 St. Rt. 402 Hardin, KY**  
**From Hardin, KY: At the 4 Way Stop, take Hwy 402 East**  
**3.9 miles to auction site.**  
**From Aurora, KY: Take Hwy. 402 West 4.7 miles to Auction Site.**  
**SIGNS POSTED!!**

- Tract 1 - 2 Bedroom Home on 2 Acres +/-**
- Tract 2 - 1.5 Acres +/-**
- Tract 3 - 1.5 Acres +/-**
- Tract 4 - 27 Acres +/- w/stock barn**
- Tract 5 - 33 Acres +/-**



**65 Acres+/-**  
in 5 Tracts & Combinations

# HARRIS

REAL ESTATE & AUCTION

3855 St. Rt. 45N • Mayfield, KY  
(270) 247-3253 • (800) 380-4318