

**Absolute  
Land Auction**

Saturday,  
September 16, 2006  
@ 10:00 AM

**160.924**

**ACRES**  
in 16 Tracts  
& combinations

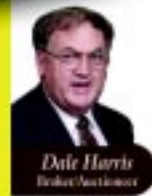
First Class Mail

FIRST CLASS  
U.S. POSTAGE  
PAID  
MAYFIELD, KY 42066  
PERMIT NO 25

September 2006						
S	M	T	W	T	F	S
					1	2
				7	8	9
3	4	5	6	13	14	15
10	11	12	13	20	21	22
17	18	19	20	27	28	29
24	25	26	27	28	29	30



A Leader in Land Marketing  
[www.harrisauctions.com](http://www.harrisauctions.com)



Dale Harris  
Broker/Auctioneer

Near Mayfield, Benton & Kirksey, Kentucky

**HARRIS**

REAL ESTATE & AUCTION  
(270) 247-3253 • 800-380-4318



Michael Harris  
Broker/Auctioneer

Visit our Website: [www.harrisauctions.com](http://www.harrisauctions.com)

*Your Professional Auctioneers*

# Absolute Land Auction

Saturday, September 16th, 2006 @ 10:00 AM  
The Late Casie Ausenbaugh Estate

**160.924 Acres**  
in 16 tracts & combinations

**GRAND BRICK HOME WITH 3 ACRE LAKE**  
**3 FARMS IN GRAVES AND CALLOWAY COUNTY**

**394 Letha Rd. Mayfield, Ky at the Graves-Marshall Co. line on Hwy. 58**

**160.924 Acres**  
in 16 tracts & combinations

Saturday, September 16th, 2006  
@ 10:00 AM

**Absolute Land Auction**

**HARRIS**  
REAL ESTATE & AUCTION  
(270) 247-3253 • 800-380-4318

Auction held at The Ausenbaugh Homeplace  
**394 Letha Road**

Near Mayfield, Benton, & Kirksey Kentucky

**37.025 Acres on Downing  
Road in Calloway County**

Open House  
Tuesday, Sept. 12, 2006  
5-7 PM

**HARRIS**

REAL ESTATE & AUCTION  
2088 ST. RT. 45 NORTH  
MAYFIELD, KY 42066  
(270) 247-3253 • 800-380-4318  
"YOUR PROFESSIONAL AUCTIONEERS"  
[www.harrisauctions.com](http://www.harrisauctions.com)



and 123.564 Acres in  
Graves County

# ABSOLUTE LAND AUCTION

SATURDAY, SEPTEMBER 16TH, 2006 @ 10:00 AM

**160.924  
ACRES**

**IN 16 TRACTS  
& COMBINATIONS**



**Auction Held at The Aussenbaugh Homeplace 394 Letha Road**

**Home and Farms #1 & #2 Location: 394 Letha Road, Wadesboro Road, and County Line Road MAYFIELD, KY.** From Mayfield, KY Take Hwy. 58/80/402 East 8.2 Miles To County Line Rd., Go North 8/10 Mile On County Line Road To Letha Road Farms # 1& 2. From Benton Take Hwy. 58 Southwest 8 Miles To Hwy. 58/80/402, Proceed West 2.3 Miles To County Line Road.

**Farm #3 Near Kirksey, KY Calloway County Location:** From Kirksey Take Backusburg Rd. Hwy. 464 3.6 Miles To Downing Road, Go North 4/10 Mile To Farm. *Signs Posted!*



## Auction Terms & Conditions

**REAL ESTATE TERMS:** 15% down day of sale, balance in 30 days. Make your inspections prior to day of sale, buyer will be required to sign a lead base paint waiver.

**PERSONAL PROPERTY:** Cash or check day of sale, with proper identification.

Information supplied is without any warranties or representations, either expressed or implied whatsoever, from Harris Auction, sellers or their respective representatives, agents or employees. Prospective bidders are advised to avail themselves of the land and to make an inspection of the premises on their own behalf, consulting whatever advisors they may feel appropriate. Although all information in all advertisements is obtained from sources deemed reliable. All announcements day of sale takes precedence over printed material.

**REAL ESTATE WILL SELL AT 10:00 AM REGARDLESS OF PRICE. BUY ANY TRACT, COMBINATION, OR ENTIRE PROPERTY**

**FARM #1 AND #2 123.564 ACRES IN GRAVES COUNTY LETHA ROAD – WADESBORO ROAD – COUNTY LINE ROAD. REAL ESTATE TRACTS**

**TRACTS 1-14 :** Tract 1\* Prestigious 3 or 4 Bedroom Brick Home With Walk Out Basement, 2 Car Attached Garage & 3 Baths All Over Looking A 3 Acre Lake, Open Floor Plan In Living Room With Fireplace, Giving Way To The Sun Porch That Opens Onto The Deck For Outside Enjoyment, Open Dining Room, Kitchen Offers Unlimited Cabinet Space W/ Island. Master Bedroom Has Great View Of Lake And Large Setting Area, And Master Bath In The Hall. The Two Guest Bedrooms Have A Jack And Jill Bath. Outside The Home Is Concrete Patio, Underground Swimming Pool With Privacy Fence, 4 Car Detached Garage, And A Circle Concrete Drive Way, And Small Pond Stocked With Catfish. All On 6.762 Park Like Acres, **Tract 2\*** 1.898 Acres With 30'x80' Metal Shop, **Tract 3\*** 11.722 Acres With 3 Acre Lake Great Building Tract, **Tract 4\*** 7.098 Acres **Tract 5\*** 8.037 Acres **Tract 6\*** 14.818 Acres **Tract 7\*** 22.870 **Tract 8\*** 11.082 **Tract 9\*** 11.111 **Tract 10\*** 11.666 **Tract 11\*** 2.356 **Tract 12\*** 4.541 **Tract 13\*** 4.878 **Tract 14\*** 5.056

\*Graves County Farm Service Agency Farm #11510 Tract #4962 Corner Of Wadesboro Road and Letha Road Having 25 Acres In CRP Program With Annual Income Of \$2,096.00. Contract Until 2007.



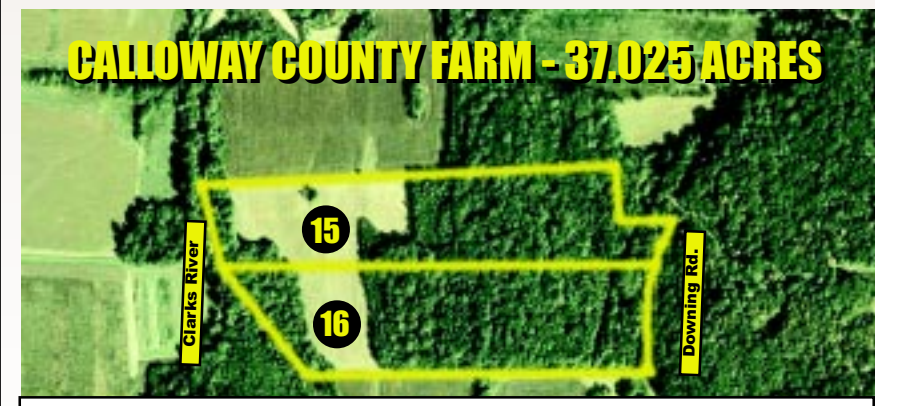
Real Estate Sells First At 10:00 AM. Auction Held At The Aussenbaugh Homeplace 394 Letha Rd.

**Tractor and Equipment Will Sell At Approximately 12:30 PM**  
**JOHN DEERE TRACTOR – EQUIPMENT – GUNS – SCAG MOWER – ANTIQUES**  
**TRACTOR/EQUIPMENT-** JD 7810 MFWD, 465 Hours, Duals, 16.9-30R1 Fronts, Front Weights, 3 Remotes, Quick Hitch, SN, 740 John Deere Quick Attach Front End Loader, 20' Bush Hog, Allis-Chalmers 6 Row Planter, 3 Pt. Hitch Post Hole Digger, 6' Box Blade, Lawn Airtator, 5 HP Silver Bullett Sanborn Air Compressor, Metal Racks, Tool Box, Motor Lift, Lincoln Welder, 40 Amp Battery Charger, Scag "Super Z" Zero Turn Mower 61" Cut.

**GUNS-** Marlin 22 Rifle w/Tasco Scope, Ruger M-77 Mark II 223 Rifle w/ Stainless Steel Barrel & Tasco Scope, Rifle Marked USA 1917, Ruger 25-06 w/Tasco Scope, 3- 50 Caliber Black Powder Guns w/Scopes, Tasco Scope 3.5x10x50 mm, Gun Cases, 2 BSA Scopes 8x32x50 **FURNITURE-** Sun Quest Wolf Tanning Bed 24 Bulbs, Drop Front Secretary w/ Rounded Front Glass Door, Upright Freezer, Office Desk & Chair, 3 Ft. Safe, Maytag Washer & Dryer, Kenmore Side By Side Refrigerator, Coffee Table w/ Queen Anne Legs, Computer Equipment, Work Tables.

**COLLECTABLES-** Butter Churns, 2 - #5 Crock, 4 Aladdin Lamps, 8 Oil Lamps, Cow Bell, Flat Irons, Razor Strap, Antique Shaving Set, Old Medicine Bottles, Miniature Finger Lamps, "Moon & Stars" Covered Dishes, Small Carnival Glass Bowls, Gilbert Mantle Clock, Wall Clock, Ken Holland Prints, Quilts, Linens.

**TRUCKS-** 1985 GMC Sierra 3500 Automatic Has A Metal Dump Bed w/ Sides 22,634 Miles, 1995 Chevy Kodiak 5 Speed w/ Wood Bed Only 7,500 Miles.



**AUCTION HELD AT THE AUSSENBAUGH HOMEPLACE**



# HARRIS

**REAL ESTATE & AUCTION**  
**2088 ST. RT. 45 NORTH**  
**MAYFIELD, KY 42066**

**(270) 247-3253 • 800-380-4318**

**"YOUR PROFESSIONAL AUCTIONEERS"**

**www.harrisauctions.com**

**FARM #3 - 37.025 ACRES**  
**DOWNING ROAD,**  
**ALLOWAY COUNTY**

**REAL ESTATE TRACTS-** Tract 15\* 19.507Acre Building Tract, **Tract 16\*** 17.518 Acres Open & Timber Land, **These 2 Tracts Join Clarks River. Great Hunting!**

\*Calloway County Farm Service Agency Farm Having 10.58 Acres Open Land.